



Genuine accessories  
for the C-Class Saloon & Estate



Mercedes-Benz

# Contents

004 Exterior

Light-alloy wheels  
Wheel accessories

012 Telematics

Multimedia  
Navigation  
Telephony

020 Interior

Interior appointments  
Child safety

026 Cargo & Care

Carrier systems  
Boot/load compartment accessories

038 Quality & Safety

040 Collection

Personal accessories

044 AMG

Light-alloy wheels  
Bodystyling  
Interior

048 Index













# Exterior

Light-alloy wheels  
Wheel accessories

01 Pulaha | **incenio** 45.7cm (18-inch)  
5-twin-spoke wheel

# More possibilities

C-Class drivers appreciate the possibilities genuine accessories offer when it comes to adding dynamic, stylish, top-quality extra touches.

We offer a wealth of attractive options for the current model of the C-Class – starting where it all begins, as it were, with the wheels of your car. Their expressive design creates an individual look for your Mercedes-Benz. And they uncompromisingly deliver the C-Class's performance to the road.

We subject each wheel model to highly intensive testing to ensure that it delivers the extra safety you expect of the brand.

## 01 Pulaha

### **incenio 5-twin-spoke wheel**

Finish: sterling silver

Wheel: 7.5 J x 18 ET 47

Tyre: 225/40 R18

A204 401 2902 9709

Option for rear axle:

Wheel: 8.5 J x 18 ET 58

Tyre: 245/35 R18

A204 401 3002 9709

Wheel: 8.5 J x 18 ET 54

Tyre: 255/35 R18

A204 401 5402 9709

## 02 Proserpina

### **incenio 5-spoke wheel**

Finish: available in sterling silver (pictured) and titanium silver

Wheel: 7.5 J x 17 ET 47

Tyre: 225/45 R17

A204 401 2702 9709 (sterling silver);

A204 401 2702 9765 (titanium silver)

Option for rear axle:

Wheel: 8.5 J x 17 ET 58

Tyre: 245/40 R17

A204 401 2802 9709 (sterling silver);

A204 401 2802 9765 (titanium silver)



# Exterior

**incenio**  
light-alloy wheels

## 03 Redali

### **incenio 5-spoke wheel**

Finish: titanium silver/high-sheen

Wheel: 7.5 J x 17 ET 47

Tyre: 225/45 R17

A204 401 6002 7X07

Option for rear axle:

Wheel: 8.5 J x 17 ET 58

Tyre: 245/40 R17

A204 401 6102 7X07



03 | 43.2 cm | 17"



04 | 43.2 cm | 17"



05 | 40.6 cm | 16"



06 | 40.6 cm | 16"

## 04 incenio 7-spoke wheel

Finish: available in shadow chrome (pictured) and palladium silver/high-sheen

Wheel: 7.5 J x 17 ET 47 | Tyre: 225/45 R17

A204 401 6902 7X29 (shadow chrome)

A204 401 6902 7X19 (palladium silver/high-sheen)

Option for rear axle:

Wheel: 8.5 J x 17 ET 58 | Tyre: 245/40 R17

A204 401 7002 7X29 (shadow chrome)

A204 401 7002 7X19 (palladium silver/high-sheen)

## 05 Pristix | incenio 7-spoke wheel

Finish: available in titanium silver (pictured) and sterling silver

Wheel: 7 J x 16 ET 43.5 | Tyre: 205/55 R16

A204 401 6802 9765 (titanium silver);

Wheel: 7 J x 16 ET 43 | Tyre: 205/55 R16

A204 401 2602 9709 (sterling silver)

## 06 Balodis | incenio 10-spoke wheel

Finish: champion silver

Wheel: 7 J x 16 ET 43 | Tyre: 205/55 R16

B6 647 4525





01 | 43.2 cm | 17"



02 | 43.2 cm | 17"



03 | 43.2 cm | 17"



04 | 43.2 cm | 17"



05 | 43.2 cm | 17"

#### 01 5-twin-spoke wheel

Finish: titanium silver

Wheel: 7.5J x 17 ET 47 | Tyre: 225/45 R17

A204 401 7602 9765

Option for rear axle:

Wheel: 8.5J x 17 ET 58 | Tyre: 245/40 R17

A204 401 7702 6765

#### 02 Multi-spoke wheel

Finish: titanium silver

Wheel: 7.5J x 17 ET 47 | Tyre: 225/45 R17

A204 401 8102 9765

Option for rear axle:

Wheel: 8.5J x 17 ET 58 | Tyre: 245/40 R17

A204 401 8202 9765

#### 03 5-spoke wheel

Finish: titanium silver

Wheel: 7.5J x 17 ET 47 | Tyre: 225/45 R17

A204 401 8702 9765

Option for rear axle:

Wheel: 8.5J x 17 ET 58 | Tyre: 245/40 R17

A204 401 9002 9765

#### 04 10-spoke wheel

Finish: titanium silver

Wheel: 7.5J x 17 ET 47 | Tyre: 225/45 R17

A204 401 8002 9765

#### 05 5-Y-spoke wheel

Finish: titanium silver

Wheel: 7.5J x 17 ET 47 | Tyre: 225/45 R17

A204 401 5802 9765

#### 06 7-twin-spoke wheel

Finish: titanium silver

Wheel: 7J x 16 ET 43 | Tyre: 205/55 R16

A204 401 7102 9765

Wheel: 7.5J x 17 ET 47 | Tyre: 225/45 R17

A204 401 7402 9765

#### 07 5-twin-spoke wheel

Finish: titanium silver

Wheel: 7J x 16 ET 43 | Tyre: 205/55 R16

A204 401 7202 9765

Wheel: 7.5J x 17 ET 47 | Tyre: 225/45 R17

A204 401 7502 9765

#### 08 7-spoke wheel

Finish: titanium silver

Wheel: 7J x 16 ET 39 | Tyre: 195/60 R16

A204 401 1002 9765

Wheel: 7J x 16 ET 43 | Tyre: 205/55 R16

A204 401 1102 9765

#### 09 5-twin-spoke wheel

Finish: titanium silver

Wheel: 7.5J x 17 ET 47 | Tyre: 225/45 R17

A204 401 7802 9765

Option for rear axle:

Wheel: 8.5J x 17 ET 58 | Tyre: 245/40 R17

A204 401 7902 9765

#### 10 Multi-spoke wheel

Finish: titanium silver

Wheel: 7.5J x 16 ET 53 | Tyre: 225/55 R16

A204 401 7302 9765



*Because of differences in national regulations, various different versions of each vehicle exist. Please also bear in mind that vehicle development is permanently ongoing. As a result, not all of the wheel/tyre combinations shown in this brochure will be approved for your particular Mercedes-Benz.*

*Your Mercedes-Benz partner, however, has access to constantly updated information on every Mercedes-Benz wheel, including the relevant technical inspection findings and licensing conditions, and will be happy to advise you*

# Exterior

Mercedes-Benz  
light-alloy wheels





01 | 43.2 cm | 17"



02 | 43.2 cm | 17"



03 | 43.2 cm | 17"



04 | 43.2 cm | 17"  
40.6 cm | 16"



05 | 40.6 cm | 16"

#### 01 17-spoke wheel

Finish: titanium silver

Wheel: 7.5J x 17 ET 47 | Tyre: 225/45 R17

A204 401 1202 9765

Option for rear axle:

Wheel: 8.5J x 17 ET 58 | Tyre: 245/40 R17

A204 401 0102 9765

#### 02 5-twin-spoke wheel

Finish: titanium silver

Wheel: 7.5J x 17 ET 47 | Tyre: 225/45 R17

A204 401 0402 9765

#### 03 7-twin-spoke wheel

Finish: titanium silver

Wheel: 7.5J x 17 ET 47 | Tyre: 225/45 R17

A204 401 0502 9765

Option for rear axle:

Wheel: 8.5J x 17 ET 58 | Tyre: 245/40 R17

A204 401 0302 9765

#### 04 12-spoke wheel

Finish: titanium silver

Wheel: 7J x 16 ET 43 | Tyre: 205/55 R16

A204 401 0602 9765

Wheel: 7.5J x 17 ET 47 | Tyre: 225/45 R17

A204 401 0002 9765

#### 05 7-spoke wheel

Finish: titanium silver

Wheel: 7.5J x 16 ET 53 | Tyre: 225/50 R16

A204 401 0202 9765



#### Choose your favourite wheels online

Our Accessories Configurator shows you at a click of the mouse how the various Mercedes-Benz light-alloy wheels will look on your vehicle. Visit our website at [www.mercedes-benz-accessories.com](http://www.mercedes-benz-accessories.com)



## Hub caps

Protect the hub from dirt.

Available in the following versions:

- 06 classic Roadster design in blue
- 07 classic Roadster design in black
- 08 black with chrome star
- 09 sterling silver with chrome star
- 10 titanium silver with chrome star

## 11 Valve caps

## 12 Rim locks

Set consisting of coded key and one lock per wheel

Wheel bolts | not pictured

## 13 Tyre pressure gauge

Compact design. Saves readings.

Suitable for all tyre valves (including cycle tyres).

Keeping tyres at the optimum pressure saves fuel and reduces tyre wear. Supplied with leather pouch

## 14 Snow chain systems

The RUD-matic DISC snow chain has a user-friendly design and can be fitted and removed quickly. With extra-reinforced chain links for the toughest conditions and excellent traction on snow and ice, it is a reliable companion in wintry road conditions

## 15 Mud flaps

Protect the underbody and the sides of the car from loose chippings and dirt

# Exterior

Mercedes-Benz  
light-alloy wheels  
Wheel accessories



01



# Telematics

Multimedia  
Navigation  
Telephony



01 iPad docking station for rear compartment

# Multitasking

Preprogram a good mood in the rear of your C-Class. With the new iPad docking station for the rear compartment, for example, which provides a secure and ergonomically optimised mount for your precious devices. Or with the Rear Seat Entertainment System, designed to deliver one shared or two separate entertainment programmes.

Whatever you choose, the telematics solutions for your C-Class always benefit the driver: directly in the case of the fully integrated navigation systems, for example, and indirectly by ensuring a good mood in the rear of the car.

02



01



## 01 iPad® docking station

Mobile entertainment is the big draw of the Apple iPad. The innovative docking station allows the tablet computer to be integrated into the rear of the C-Class. The tablet PC's battery is charged from the moment it is inserted into the mount. All of the entertainment options stored on the iPad are available whilst driving. If the car is also equipped with the InCar Hotspot, even an iPad not equipped with UMTS functionality can be fully connected to the internet

*A range of multimedia connections [A and B], 2 sets of infrared headphones [C] and a remote control [D]: the Rear Seat Entertainment System offers everything you need for in-car entertainment*





## 02 Rear Seat Entertainment System

This high-performance DVD system allows the rear passengers to watch DVDs, look at their favourite pictures and even play video games on two superb 17.8 cm LCD colour screens, without disturbing the driver or restricting the rear field of vision. The system's separate DVD players mean that rear-seat passengers have the option of watching a different video source on each screen, allowing each to select their own individual entertainment. The USB and SD card interfaces allow other storage media to be used too. And a separately available video cable allows you to watch video and image files from external sources

The system is designed to be retrofitted in your C-Class – no factory-fitted pre-installation required.  
The system is available with one monitor or with two monitors

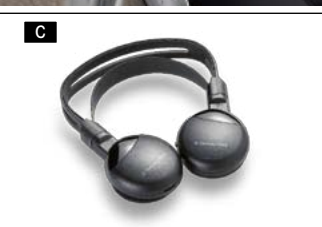
## 03 Media Interface video cable

Transforms your Mercedes-Benz into a cinema: the Media Interface video cable allows you to watch videos on the monitor of your COMAND Online – while the vehicle is stationary. Various video sources (e.g. camcorder, iPod video, iPhone, video player, etc.) can also be connected to the Media Interface via the AUX connection

Only in conjunction with Media Interface (Code 518). Does not support your iPhone's phone function.  
Please contact your Mercedes-Benz partner for details of other function restrictions

## 04 SD memory card

The COMAND Online in your C-Class features a slot for SD memory cards. Use the SD memory card as a convenient way to play music





## 01 Mercedes-Benz InCar Hotspot

Introduces the internet to your C-Class. All you need is a WLAN-enabled device (laptop, mobile phone, MP3 player). The system provides a quick, stable connection to data networks such as HSDPA/UMTS or GSM/GPRS/EDGE via your car's roof aerial. Up to four devices can be connected at the same time

System requirements: Convenience Telephony (Code 386), Audio 50 APS (Code 525 or 511) or COMAND Online (Code 527 or 512); WLAN-enabled end device with WLAN IEEE 802.11 b/g interface

## 02 Mobile-phone holders

When it comes to selecting a mobile for your Mercedes-Benz, you've never had so much choice. One "click" is all it takes to replace the mobile-phone holder. It takes a matter of seconds and is as straightforward as inserting the mobile into the holder itself.

Changing your mobile and even alternating between different models of mobile no longer presents a problem. There are no compromises when it comes to convenience-enhancing telephone technology either.

Further advantages of a mobile-phone holder:

- Optimum reception quality as a result of using vehicle's external aerial
- Mobile's battery is charged
- Access to internal phone memory
- Convenient operation using multifunction steering wheel

To use a mobile-phone holder, your car must be factory-fitted with optional extra Code 386, Convenience Telephony. Holders are available for various current Nokia, BlackBerry, Apple and Sony Ericsson mobile phones

For further information about using the phone while in your car, go to [www.mercedes-benz.com/connect](http://www.mercedes-benz.com/connect) or contact your Mercedes-Benz partner.



02



03

## 03 Mercedes-Benz Bluetooth® (SAP) telephone module

The telephone module is designed to extend the mobile communication system in your Mercedes-Benz. Just connect it to your Convenience Telephony system (Code 386) in the centre armrest, and start using your mobile via the on-board hands-free system.

Two versions of the Mercedes-Benz Bluetooth SAP<sup>1</sup> telephone module are available: one in the form of a closed box [picture 03] and the other with a corded handset [not pictured]. Both versions feature a SIM card reader.

Other advantages of the telephone module:

- Access to contact details saved on your SIM card
- Optimum reception quality as a result of using vehicle's external aerial
- Read and receive text messages
- Charge mobile phone via USB interface (closed box only)

1) SAP (SIM Access Profile) allows the module to read your mobile phone's SIM card



## 01 Becker® MAP PILOT

Transform your Audio 20 CD radio into a high-performance, easy-to-use navigation system. Becker MAP PILOT uses the standard-fit screen and is conveniently operated via the vehicle controller and the Audio 20 CD keypad. The plug-in navigation module can be connected to your PC via USB to download the latest updates from the Becker website

Available in Europe only





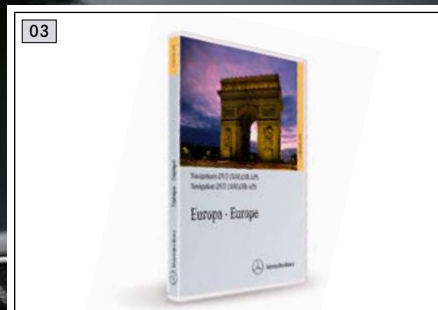
## 02 COMAND Online multimedia system with 6-DVD changer

High-performance multimedia system with 6-DVD changer, hard-drive navigation system, telephone keypad and internet browser, shown on high-resolution, 17.8 cm colour display.

- Navigation system with 2D/3D map views, Speed Limit Assist and automatic congestion avoidance (TMC Pro)
- Internet access when vehicle is stationary
- MUSIC REGISTER with 10 GB storage for diverse audio files (MP3, WMA, AAC), USB interface incl. CD cover display and AUX-IN connection (in centre armrest), Bluetooth interface with hands-free function and audio streaming for music playback, slot for SD memory cards, DVD Video
- LINGUATRONIC voice-operated control system for audio, phone and navigation

## 03 Europe navigation DVD for COMAND Online

03



**Rediscover navigation.** *In recent years integral navigation has made journeys more relaxed, less time-consuming and, above all, safer. If you want to continue to enjoy these advantages to the full, we recommend that you regularly replace the navigation DVD in your navigation system with the latest version. Ensuring that the data you're using matches the roads you're travelling on. And that the only surprises you encounter during your journey are of a pleasant nature. The data for the Mercedes-Benz navigation systems is regularly updated. Please ask your Mercedes-Benz partner for the latest navigation DVDs*

Mercedes-Benz



# Interior

Interior appointments  
Child safety



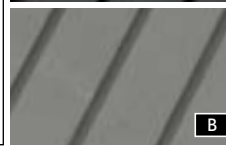
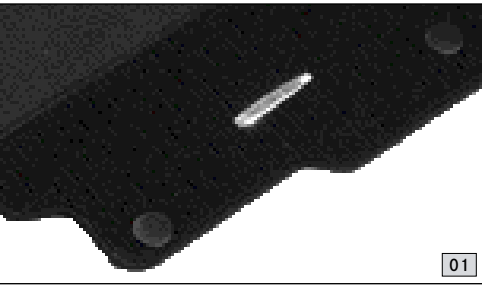
01 Illuminated door sill panel

# Added value

When you take your seat in a Mercedes-Benz, expectations are always high – partly, of course, because of the exceptional driving experience, but also because of the on-board atmosphere, which leaves little to be desired in the way of comfort and material quality.

Mercedes-Benz floor mats are no exception here. These are the interior components which have to withstand the highest wear and tear, so we pay great attention to their development, testing them for temperature-resistance, wear-resistance and resistance to moisture.

After all our aim is to surpass your expectations.



- 01 CLASSIC rep floor mats
- 02 CLASSIC velour floor mats
- 03 CLASSIC all-season floor mats

Durable, hardwearing materials. Available in black [A], alpaca grey [B] and almond beige [C] to match the interior. Can be clip-fastened to the floor of the vehicle to prevent slipping

- 04 Illuminated door sill panels

The blue illuminated Mercedes-Benz lettering is activated every time you open the door to get in or out. These illuminated door sill panels, in ground stainless steel, are a further “highlight” of the C-Class

# Interior

Interior appointments



## 05 Stainless steel pedal covers

Pedal covers in ground stainless steel with non-slip stud panel. Available for automatic and manual models

## 06 Coat hanger

Robust coat hanger made from chromed metal. Easy to fit to the front head restraints. The ideal way to transport items of clothing without creasing them | not pictured

## 07 Back cushion

Ergonomic, individually adjustable cushion, designed to support the back on long journeys. Available in anthracite | not pictured

## 08 Vario bag

Plenty of extra stowage space for the really important things in life. Available in "DaimlerSquare" design

### Cup holder for the centre console

Black. Insert for the centre console. Holds up to two drink containers within easy reach. The insert simply slots into the standard stowage compartment in the centre console | not pictured





## Mercedes-Benz child safety

All Mercedes-Benz child seats are available in the limited-edition “Limited Black” design. The covers are washable and very hardwearing. Replacement covers for the head sections of all seats are available in flannel grey and chilli red [pictures 04 and 05] as well as a complete replacement cover in the popular “DaimlerSquare” design [picture 06].

Mercedes-Benz child seats are available with automatic child seat recognition as an option. If your car also has automatic child seat recognition, the front passenger airbag is automatically deactivated when a child seat with automatic child seat recognition is installed on the front passenger seat. All child seats are also suitable for use in vehicles without ISOFIX attachment points.



### 01 “KidFix” child seat

Booster seat for optimum side-impact protection, with height-adjustable backrest. The “KidFix” seat is secured using the 3-point seat belt and ISOFIT attachment points. Available with automatic child seat recognition as an option. For children between the ages of around 3.5 and 12 (15 to 36 kg)

### 02 “BABY-SAFE plus II” child seat

The patented D-SIP® system offers optimum side-impact protection for babies from birth. The integral recline system allows a flatter reclining position for your newborn. Headrest and harness height can be adjusted to suit your child. For babies up to around 15 months (up to 13 kg)

### 03 “DUO plus” child seat

Optimum safety for children between the ages of around 8 months and 4 years (9 to 18 kg). Fitted as standard with top tether, an additional belt for securing the head section, a height-adjustable shoulder belt and ventilation channels. With automatic child seat recognition and ISOFIX attachment points. Adjustable tilt

### 04–06 Child seat covers

Replacement covers are available for all child seat models – either in the form of a cover for the head section in flannel grey [picture 04] or chilli red [05] or as a complete replacement cover in the popular “DaimlerSquare” design [06]

### 07 Lateral support headrest for integral child seat

Supports your child’s head and shoulders and enhances comfort, particularly for a sleeping child. Ensures optimum seat belt routing in conjunction with the integral child seat. For children aged between around 2 and 12 (12.5 to 36 kg). Cannot be used in conjunction with cover for integral child seat

### 08 Padded play table for integral child seat

Protects the child’s abdomen when using the integral child seat. For children between the ages of around 2 and 4 (12.5 to 18 kg)



01

Mercedes-Benz

02





# Cargo & Care

Carrier systems

Boot/load compartment accessories

- 01 Mercedes-Benz roof box 450
- 02 New Alustyle basic carrier bars

# Extra load

The Mercedes-Benz C-Class is a car that delivers high performance across the board. It offers outstanding transport options which you can extend to meet your individual needs using the genuine accessories shown here.



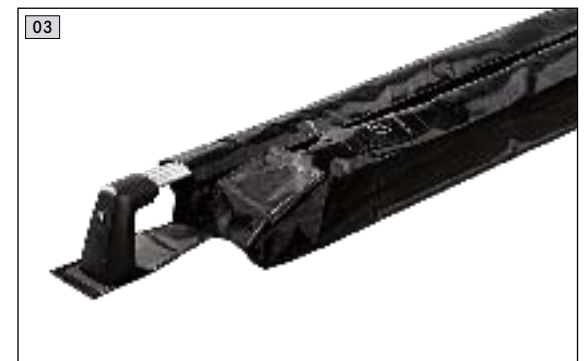
## 01 Alustyle "easy-fix" basic carrier bars for the Estate

## 02 New Alustyle basic carrier bars for the Saloon

The Alustyle system opens up a wealth of flexible options when it comes to transporting sports equipment and luggage. Simply combine the Alustyle basic carrier bars with a variety of different roof-mounted carriers which you can see here and on the following pages. The basic carrier bars are precisely tailored to the body of your C-Class, ensuring the highest degree of safety and optimum aerodynamics

## 03 Transport and stowage bag

Robust bag, made from a high-quality nylon fabric. Protects the basic carrier bars and makes it easier to transport them



*Boxes open on both sides  
for convenient loading and  
unloading*



## Mercedes-Benz roof boxes

Elegant, aerodynamic design, made for your Mercedes-Benz. High-quality, extremely durable material. 450 and 330 models open on both sides for convenient loading and unloading

### 04 Mercedes-Benz roof box 450

Family box. Capacity approx. 450 litres. Available in black metallic, silver metallic and titanium metallic. Optional accessories: luggage set and ski rack insert

### 05 Mercedes-Benz roof box 330

Sports box. Capacity approx. 330 litres. Available in titanium metallic and matt silver. Optional accessories: luggage set and ski rack insert

### 06 Luggage set for Mercedes-Benz roof box models 450 and XL

Four bags, designed to make perfect use of the space available in the roof boxes. Made from hardwearing, water-repellent polyester. Plus two matching ski bags, each designed to hold max. two pairs of skis. Ski bag also available separately.

#### Luggage set for Mercedes-Benz roof box models 330 and L

Four bags made from hardwearing, water-repellent polyester | not pictured

### 07 Ski rack insert for Mercedes-Benz roof box models 450 and XL

A secure hold for up to five pairs of skis<sup>1</sup>.

**Ski rack insert** for Mercedes-Benz roof box models 330 and L  
A secure hold for up to three pairs of skis<sup>1</sup> | not pictured

1) Subject to geometry of skis

04 05



black metallic

silver metallic

titanium metallic

matt silver

06



07





**01 New Alustyle ski and snowboard rack "Comfort"**

For up to 6 pairs of skis or 4 snowboards. Lockable.  
Practical pull-out function makes loading and unloading easier

**02 New Alustyle ski and snowboard rack "Standard"**

For up to 4 pairs of skis or 2 snowboards. Lockable



# Cargo & Care

Carrier systems



## 03 New Alustyle bicycle rack

Depending on the permissible roof load, up to four bicycle racks can be fitted per pair of basic carrier bars. Each bicycle rack can hold one bicycle with a max. frame diameter of 98 mm (circular frame tubes) or 110 x 70 mm (oval frame tubes). The support frame folds down when not in use, reducing drag when travelling without cycles. Cycles can either be attached to the rack once it has been fitted to the roof or before it is fitted

## 04 Coil lock

Designed to help prevent theft. Available as an option for the bicycle rack





## 01 Rear-mounted bicycle rack for trailer coupling, folding

Easy-to-use, lockable rear-mounted bicycle rack, designed to provide secure transport for 2 or 3 cycles. Rack is easy to attach to trailer coupling, and cycles are equally easy to fit to rack. An ingenious roller mechanism means that the boot/load compartment can still be opened, even when cycles are attached [A]. The rack is easy to fold [B] for space-saving stowage in the boot/load compartment, at your holiday accommodation or at home. The robust nylon transport bag is designed to protect the folded bicycle rack when stowed

### Rear-mounted bicycle rack for max. 2 cycles

A000 890 1493

### Rear-mounted bicycle rack for max. 3 cycles

A000 890 1593

Picture shows similar product. Available from 3rd quarter of 2011

## 02 Trailer coupling

Folds away using control in boot/load compartment.

Max drawbar load: 75 kg

## 03 Adapter

For trailer with 7-pin plug

## 04 Tie-down strap

Even heavy objects can be secured in place easily using this strap





01

**01 Partition/divider**

Black. Two interconnecting steel mesh sections used to divide the load compartment and to shield the passenger compartment. Partition features door

**02 Deep boot tub**

The hygienic way to transport items in the load compartment. Suitable for transporting foodstuffs

**03 Shallow boot tub**

Simple to clean. Non-slip thanks to PP-Flex material. Suitable for transporting foodstuffs

**04 Load compartment cover**

Helps keep your C-Class's load compartment clean. Black. Can be extended up to 1st row of seats

**05 Luggage nets**

Available for the floor and sides of the boot/load compartment, the rear bench seat and the load sill. Prevent lightweight objects from sliding around during your journey. All nets are in pocket format

**06 Reversible mat**

The reversible mat has a high-quality velour side and a non-slip side. It helps keep the original floor of the load compartment clean. Available in black. Can be connected to concertina load sill protector

**07 Non-slip mat**

Black. Non-slip mat made from oil and acid-resistant polyester. Designed to fit the contours of the boot/load compartment

**08 Concertina load sill protector**

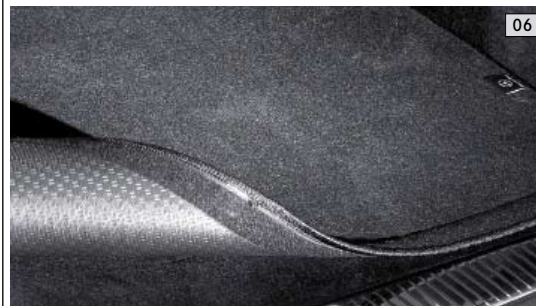
Protects bumper and load sill from scratches. Can be connected to reversible mat



02



03



# Cargo & Care

Boot/load compartment  
accessories



**01 Concertina bags  
for EASY-PACK load-securing kit (Code 942)**

Two bags made from robust, washable nylon, attached to a sturdy aluminium frame. The frames are simply slotted into the load system strips in either side of the load compartment floor. Each bag features two large stowage compartments and has two straps, making it easy to remove and carry. Once fitted, the bags are simply opened out concertina-style. The two bags are fitted opposite one another and feature Velcro fastenings which allow them to be joined in the centre

**02 Stowage crate**

Can be divided into four sections using the adjustable partitioning elements. Ideal for transporting items you don't want to tip over or slide around. The crate can be secured in place by means of Velcro. Full functionality only in conjunction with the shallow boot tub

**03 Shopping crate**

Anthracite. Collapsible

**04 Coolbox**

Black/grey. Hard case with fabric cover featuring pockets for extra items. Cold/hot switch. Capacity: 24 litres. 12 V connection. Adjustable carrying strap

**05 Coolbag**

Black. Fabric outside, plastic liner inside. Outside pockets offer plenty of room for extra items. Capacity: 12 litres. 12 V connection. Adjustable carrying strap





#### 06 Rectifier

Allows the coolbox and the coolbag to be connected to a 230 V socket at home

#### 07 Charger with trickle charge function

With its cutting-edge technology, the Mercedes-Benz charger ensures the longest possible battery life. Available in a 3.6 amp version and a 25 amp version

#### 08 Vehicle tool kit

6-piece tool kit in practical zipped bag. Includes jack, wheel wrench, wheel centering bolt, chock, shim plate and gloves

#### 09 Box of replacement bulbs

The box of replacement bulbs ensures that you always have the right bulbs at hand for your C-Class. So if one of the bulbs fails or you're driving in one of the many countries where daytime running lamps are compulsory, you're well prepared

#### 10 Fluorescent jackets

Already compulsory in many countries, the bright orange and yellow fluorescent jackets with reflective stripes are conspicuous even in the dark. Available individually or as a pack of two



## Cargo & Care

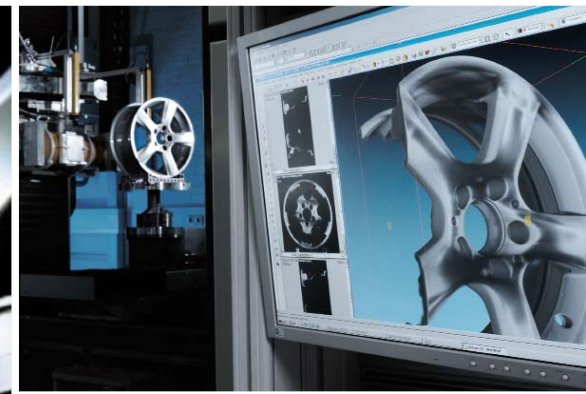
Boot/load compartment  
accessories



## I. Design & Development

Mercedes-Benz genuine accessories make your dream car a reality – while ensuring that it remains a Mercedes-Benz through and through:

- Individualisation options are developed in accordance with the Mercedes-Benz car design philosophy
- The use of CAD data from Mercedes-Benz Vehicle Development ensures precision-fit accessories



## II. Quality & Safety

When it comes to Mercedes-Benz vehicles, quality and safety are paramount. You can feel equally safe with Mercedes-Benz genuine accessories as a result of:

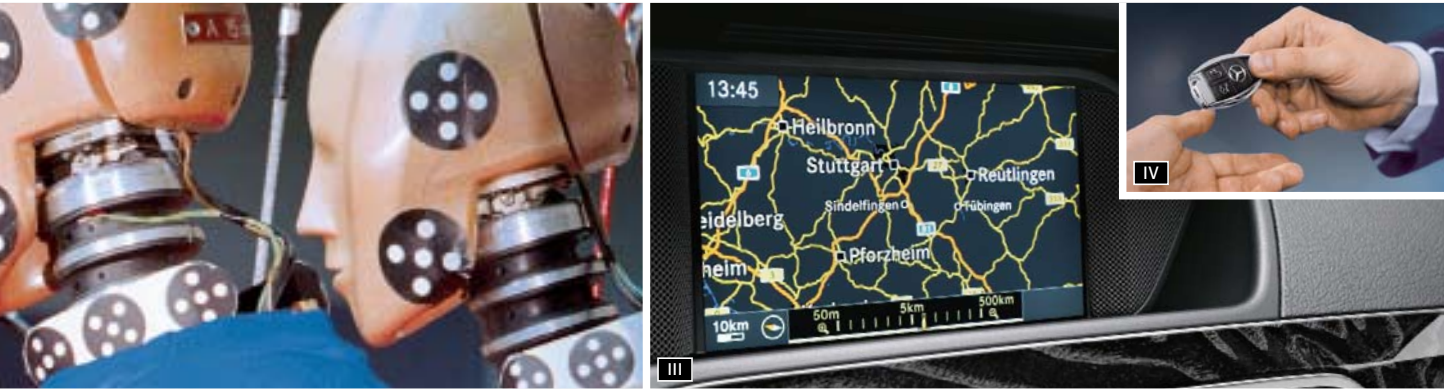
- Stringent safety measures and extensive load testing, including the use of crash test facilities and the wind tunnel
- Harmonised development of both vehicle and Mercedes-Benz genuine accessories
- The highest of standards, far in excess of those prescribed by law



# Mercedes through and through

Quality  
& Safety

When you drive a Mercedes-Benz, you do so for the best of reasons. Why should your choice of accessories be governed by different standards? Pioneering when it comes to design and technology, Mercedes-Benz genuine accessories deliver on the promises of a major brand.



## III. Function & Operation

Mercedes-Benz genuine accessories form part of the vehicle concept from the outset. This results in impressive functional solutions:

- ▶ Fully integrated telematics products can be operated safely and conveniently using the multifunction steering wheel
- ▶ Roof-mounted carrier systems can be fitted quickly and without the use of additional tools
- ▶ Instructions and manuals are in standard format and easy to understand

## IV. Advice & Fitting

No one is as familiar with the ins and outs of your vehicle as our employees. And the same goes for Mercedes-Benz genuine accessories:

- ▶ Contact your Mercedes-Benz Service and Sales partners for expert advice
- ▶ Trust our trained specialists when it comes to fitting Mercedes-Benz genuine accessories





# Collection

Personal accessories

01 Men's Business watch





01

02



03



04



# More!

You know that feeling of being so overwhelmed with enthusiasm that you're left wanting more? It's a feeling we understand – which is why we've put together a few highlights from the Mercedes-Benz Collection for you to savour.

Applause. More! Applause ...

## 01 Men's Business watch

Stainless steel case and bracelet.  
Hardened mineral crystal with  
antireflective coating on one side.  
Date feature with magnifying  
window. 3D star logo on dial. Tested  
to 10 ATM. Screw back, engraved  
with Mercedes-Benz

## 02 Men's wallet

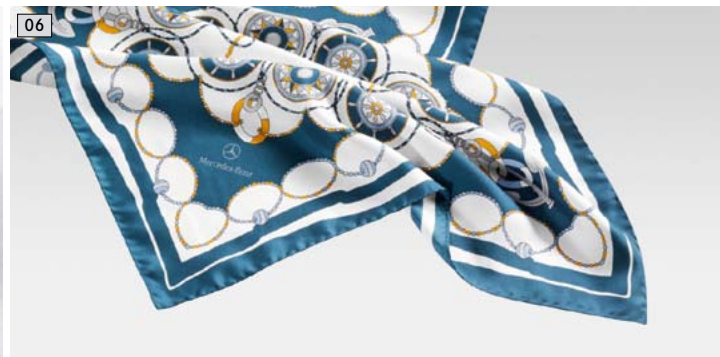
Matt black leather. 2 note sections, 1 coin compartment, 8 credit card slots, 5 pockets. Star logo stud

## 03 Men's long-sleeved slimline shirt

White cotton. With Kent collar. Easy-care. Star logo embroidered on front. By OLYMP for Mercedes-Benz. Sizes S-XXL

## 04 Tie with pin

Navy microfibre, with removable star logo pin



## 05 Women's polo shirt

Women's classic, fitted polo shirt. 95 % cotton/5 % elastane. Piqué. Ribbed collar. Button band with 5 press-studs. Mercedes-Benz logo embroidered on front. White. Sizes XS-XL

## 06 Scarf

Maritime design combined with motifs such as chains and anchors. 100 % silk. Size approx. 52 x 52 cm

## 07 "C" key ring

Key ring with split ring, centre section and articulated link in brass. The key fob is a replica of the symbol which features on the rear of the vehicle



01

02



# AMG

Light-alloy wheels

Bodystyling

Interior



03

01 AMG side skirts

02 AMG 5-twin-spoke wheel

03 AMG rear apron

## 01 AMG bodystyling

A sporty exterior for your C-Class. The AMG bodystyling components – front apron, rear apron and side skirts – are designed for optimum dynamism | also pictured on previous page



## 02 AMG 5-twin-spoke wheel

Finish: silver/high-sheen

Wheel: 8.0 J x 18 ET 50

Tyre: 225/40 R18

B6 603 1382

Option for rear axle:

Wheel: 8.5 J x 18 ET 54

Tyre: 255/35 R18

B6 603 1383

## 03 AMG 7-twin-spoke wheel

Finish: black/high-sheen

Wheel: 7.5 J x 18 ET 47

Tyre: 225/40 R18

B6 603 1509

Option for rear axle:

Wheel: 8.5 J x 18 ET 54

Tyre: 255/35 R18

B6 603 1510

Available from 2nd quarter of 2011



05 | 45.7 cm | 18"



#### 04 AMG 5-twin-spoke wheel

Finish: silver/high-sheen

Wheel: 7.5J x 17 ET 47

Tyre: 225/45 R17

B6 603 1492

Option for rear axle:

Wheel: 8.5J x 17 ET 58

Tyre: 245/40 R17

B6 603 1493

#### 05 AMG 7-spoke wheel

Finish: silver/high-sheen

Wheel: 8.0J x 18 ET 50

Tyre: 225/40 R18

B6 603 1494

Option for rear axle:

Wheel: 8.5J x 18 ET 54

Tyre: 255/35 R18

B6 603 1495

#### 06 AMG multifunction sports steering wheel

3-spoke design, flattened at top and bottom, with aluminium shift paddles. Black nappa leather, perforated in grip area

Available from 2nd quarter of 2011

#### 07 AMG door sill panels, not illuminated

Available in brushed stainless steel

Available from 2nd quarter of 2011

#### AMG door sill panels, illuminated

In brushed stainless steel, with white LED illumination | not pictured

Available from 2nd quarter of 2011

#### 08 AMG carbon fibre trim

Carbon fibre trim elements for doors and dashboard

Only in conjunction with Code 275 (Memory package)

#### 09 AMG floor mats

With embroidered AMG lettering

#### AMG indoor car cover

Silver-coloured, with black AMG logo | not pictured

#### 10 AMG spoiler lip

Genuine carbon fibre detail for the boot lid



# AMG

Light-alloy wheels

Bodystyling

Interior



# Genuine accessories for the C-Class

Light-alloy wheels are supplied without tyres, wheel bolts or hub caps

Further colour variants for individual products can be found in the separate price list for this brochure

Description	p	Item no.
<b>Adapter</b> for trailer coupling	33	A000 821 1856
<b>Alustyle “easy-fix” basic carrier bars</b> for Estate	28	A204 890 1493
<b>AMG light-alloy wheels</b>		
<b>5-twin-spoke wheel   17" silver/high-sheen</b>	47	B6 603 1492
<b>5-twin-spoke wheel   18" silver/high-sheen</b>	46	B6 603 1382
<b>7-spoke wheel   18" silver/high-sheen</b>	47	B6 603 1494
<b>7-twin-spoke wheel   18" black/high-sheen</b>	46	B6 603 1509
<b>AMG carbon fibre trim</b>	47	A204 720 5380
<b>AMG door sill panels, illuminated, white LED illumination</b>	47	B6 602 1075
<b>AMG door sill panels, not illuminated</b>	47	B6 602 1074
<b>AMG floor mats, set of 4, black</b>	47	B6 603 7218
<b>AMG front apron, with headlamp cleaning system</b>	46	B6 603 6554
<b>AMG indoor car cover for Estate</b>	47	A204 899 0486
<b>AMG indoor car cover for Saloon</b>	47	A204 899 0386
<b>AMG multifunction sports steering wheel, 3-spoke design</b>	47	A172 460 4803
<b>AMG rear apron, with APA and headlamp cleaning system</b>	46	B6 603 6555
<b>AMG side skirts</b>	46	B6 603 6644
<b>AMG spoiler lip, carbon fibre</b>	47	B6 603 6544
<b>“BABY-SAFE plus II” child seat, Limited Black, with automatic child seat recognition</b>	25	A000 970 2000 9H95
<b>Back cushion</b>	23	A000 970 0690
<b>Becker MAP PILOT, in conjunction with Code 508</b>	18	A172 900 6203
<b>Bluetooth (SAP) telephone module, box</b>	17	A212 906 8600

- 1 Finish: palladium silver/high-sheen
- 2 Finish: champion silver
- 3 Finish: sterling silver
- 4 Finish: titanium silver
- 5 Finish: titanium silver/high-sheen
- 6 Finish: shadow chrome

Description	p	Item no.
<b>Boot tub, deep</b> for Estate	34	A204 814 0441
<b>Boot tub, deep</b> for Saloon	34	A204 814 0241
<b>Boot tub, shallow</b> for Estate	34	A204 814 0341
<b>Boot tub, shallow</b> for Saloon with through-loading facility	34	A204 814 0141
<b>Boot tub, shallow</b> for Saloon without through-loading facility	34	A204 814 0041
<b>Box of replacement bulbs</b> for Saloon	37	A000 580 2510
<b>Box of replacement bulbs</b> for Estate	37	A000 580 2610
<b>“C” key ring</b>	43	B6 695 7502
<b>Charger, ECE version, 3.6 A</b>	37	A000 982 0121
<b>Charger, ECE version, 25 A</b>	37	B6 754 2027
<b>Child seat cover</b> for “BABY-SAFE plus II”, DaimlerSquare	25	A000 970 0981 9G43
<b>Child seat cover</b> for “BABY-SAFE plus II”, Limited Black	25	A000 970 0981 9H95
<b>Child seat cover</b> for “DUO plus”, DaimlerSquare	25	A000 970 0481 9G43
<b>Child seat cover</b> for “DUO plus”, Limited Black	25	A000 970 0481 9H95
<b>Child seat cover</b> for “KidFix”, DaimlerSquare	25	A000 970 0681 9G43
<b>Child seat cover</b> for “KidFix”, Limited Black	25	A000 970 0681 9H95
<b>CLASSIC all-season floor mats LHD, complete set, black</b>	22	A204 680 4348 9G33
<b>CLASSIC rep floor mats LHD, complete set, black</b>	22	A204 680 4948 9G32
<b>CLASSIC velour floor mats LHD, complete set, black</b>	22	A204 680 2148 9F87
<b>Coat hanger</b>	23	A000 814 0132
<b>Coil locks, 3 mm, set of 2, common key</b>	31	A000 583 1695
<b>COMAND Online multimedia system with 6-DVD changer, NTG4.5</b>	19	A204 900 6007

Description	p	Item no.
<b>Concertina bags</b> for Estate, in conjunction with load-securing rails, Code 942	36	A000 890 0611
<b>Concertina load sill protector</b>	34	A212 680 0246
<b>Coolbag</b>	36	B6 681 8725
<b>Coolbox</b>	36	A000 820 4206
<b>Cup holder for the centre console</b>	23	A204 680 2391
<b>Divider for Estate</b>	34	A204 860 0342
<b>"DUO plus" child seat</b> , Limited Black, with automatic child seat recognition	25	A000 970 1100 9H95
<b>"DUO plus" child seat</b> , Limited Black, without automatic child seat recognition	25	A000 970 1600 9H95
<b>Europe navigation DVD for COMAND Online</b>	19	on request
<b>Fluorescent jacket</b> , orange	37	A000 583 0461
<b>Fluorescent jackets</b> pack of 2, orange/yellow	37	A000 583 0361
<b>Headrest cover</b> for "BABY-SAFE plus II", chilli red	25	A000 970 0156 3E16
<b>Headrest cover</b> for "BABY-SAFE plus II", flannel grey	25	A000 970 0156 7N37
<b>Headrest cover</b> for "DUO plus", chilli red	25	A000 970 0356 3N16
<b>Headrest cover</b> for "DUO plus", flannel grey	25	A000 970 0356 7N37
<b>Headrest cover</b> for "KidFix", chilli red	25	A000 970 0256 3N16
<b>Headrest cover</b> for "KidFix", flannel grey	25	A000 970 0256 7N37
<b>Hub caps</b> , black with chrome star	11	B6 647 0200
<b>Hub caps</b> , Roadster design, black	11	B6 647 0201
<b>Hub caps</b> , Roadster design, blue	11	B6 647 0120
<b>Hub caps</b> , sterling silver with chrome star	11	B6 647 0206
<b>Hub caps</b> , titanium silver with chrome star	11	B6 647 0203

Description	p	Item no.
<b>Illuminated door sill panels</b> , blue, front, set of 2	22	A204 680 3635
<b>InCar Hotspot</b> for Estate	16	A204 900 5605
<b>InCar Hotspot</b> for Saloon	16	A204 900 5505
<b>incenio</b> light-alloy wheels		
7-spoke wheel <sup>1</sup>   17"	07	A204 401 6902 7X29
7-spoke wheel <sup>1</sup>   17" (RA)	07	A204 401 7002 7X29
Balodis <sup>2</sup>   10-spoke wheel   16"	07	B6 647 4525
Pristix <sup>3</sup>   7-spoke wheel   16"	07	A204 401 2602 9709
Pristix <sup>4</sup>   7-spoke wheel   16"	07	A204 401 6802 9765
Proserpina <sup>3</sup>   5-spoke wheel   17"	06	A204 401 2702 9709
Proserpina <sup>3</sup>   5-spoke wheel   17" (RA)	06	A204 401 2802 9709
Proserpina <sup>4</sup>   5-spoke wheel   17"	06	A204 401 2702 9765
Proserpina <sup>4</sup>   5-spoke wheel   17" (RA)	06	A204 401 2802 9765
Pulaha <sup>3</sup>   5-twin-spoke wheel   18"	06	A204 401 2902 9709
Pulaha <sup>3</sup>   5-twin-spoke wheel   18" (RA)	06	A204 401 3002 9709
Pulaha <sup>3</sup>   5-twin-spoke wheel   18" (RA)	06	A204 401 5402 9709
Redali <sup>5</sup>   5-spoke wheel   17"	07	A204 401 6002 7X07
Redali <sup>5</sup>   5-spoke wheel   17" (RA)	07	A204 401 6102 7X07
<b>iPad docking station</b>	14	on request
<b>"KidFix" child seat</b> , Limited Black, with automatic child seat recognition	25	A000 970 1800 9H95
<b>"KidFix" child seat</b> , Limited Black, without automatic child seat recognition	25	A000 970 1900 9H95

# Genuine accessories for the C-Class

Light-alloy wheels are supplied without tyres, wheel bolts or hub caps

Further colour variants for individual products can be found in the separate price list for this brochure

Description	p	Item no.
<b>Lateral support headrest</b> for integral child seat	25	A204 970 4850
<b>Load compartment cover</b> for Estate	34	A204 890 0050
<b>Luggage net, floor of boot</b> for Saloon	34	A204 868 0074
<b>Luggage net, floor of load compartment</b> for Estate	34	A204 868 0374
<b>Luggage net, load sill</b> for Estate	34	A204 868 0474
<b>Luggage net, load sill</b> for Saloon	34	A204 868 0174
<b>Luggage net, rear bench seat</b> for Estate	34	A204 868 0674
<b>Luggage net, side of boot</b> for Saloon	34	A204 868 0274
<b>Luggage net, side of load compartment</b> for Estate	34	A204 868 0574
<b>Luggage set</b> for roof box models 330 and L	29	A000 890 0411
<b>Luggage set</b> for roof box models 450 and XL	29	A000 890 0511
<b>Media Interface video cable</b>	15	A001 827 8004
<b>Men's Business watch</b>	42	B6 695 5133
<b>Men's long-sleeved slimline shirt</b> , size S-XXL	43	B6 695 6417 - 6421
<b>Men's wallet</b>	43	B6 695 6483
<b>Mercedes-Benz light-alloy wheels</b>		
5-twin-spoke wheel <sup>4</sup>   17"	10	A204 401 0402 9765
5-twin-spoke wheel <sup>4</sup>   16"	08	A204 401 7202 9765
5-twin-spoke wheel <sup>4</sup>   17"	08	A204 401 7502 9765
5-twin-spoke wheel <sup>4</sup>   17"	08	A204 401 7602 9765
5-twin-spoke wheel <sup>4</sup>   17" (RA)	08	A204 401 7702 9765
5-twin-spoke wheel <sup>4</sup>   17"	08	A204 401 7802 9765
5-twin-spoke wheel <sup>4</sup>   17" (RA)	08	A204 401 7902 9765
5-spoke wheel <sup>4</sup>   17"	08	A204 401 8702 9765
5-spoke wheel <sup>4</sup>   17" (RA)	08	A204 401 9002 9765
5-Y-spoke wheel <sup>4</sup>   17"	08	A204 401 5802 9765

- 1 Finish: palladium silver/high-sheen
- 2 Finish: champion silver
- 3 Finish: sterling silver
- 4 Finish: titanium silver
- 5 Finish: titanium silver/high-sheen

Description	p	Item no.
<b>7-twin-spoke wheel<sup>4</sup>   17"</b>	10	A204 401 0502 9765
<b>7-twin-spoke wheel<sup>4</sup>   17" (RA)</b>	10	A204 401 0302 9765
<b>7-twin-spoke wheel<sup>4</sup>   16"</b>	08	A204 401 7102 9765
<b>7-twin-spoke wheel<sup>4</sup>   17"</b>	08	A204 401 7402 9765
<b>7-spoke wheel<sup>4</sup>   16"</b>	08	A204 401 1002 9765
<b>7-spoke wheel<sup>4</sup>   16"</b>	08	A204 401 1102 9765
<b>7-spoke wheel<sup>4</sup>   16"</b>	10	A204 401 0202 9765
<b>10-spoke wheel<sup>4</sup>   17"</b>	08	A204 401 8002 9765
<b>12-spoke wheel<sup>4</sup>   16"</b>	10	A204 401 0602 9765
<b>12-spoke wheel<sup>4</sup>   17"</b>	10	A204 401 0002 9765
<b>17-spoke wheel<sup>4</sup>   17"</b>	10	A204 401 1202 9765
<b>17-spoke wheel<sup>4</sup>   17" (RA)</b>	10	A204 401 0102 9765
<b>Multi-spoke wheel<sup>4</sup>   17"</b>	08	A204 401 8102 9765
<b>Multi-spoke wheel<sup>4</sup>   17" (RA)</b>	08	A204 401 8202 9765
<b>Mobile-phone holders</b> The range is being extended all the time. Please contact your Mercedes-Benz partner for details	17	on request
<b>Mud flaps</b> , front set, for Saloon and Estate	11	A204 890 0078
<b>Mud flaps</b> , rear set, for Estate	11	A204 890 0778
<b>Mud flaps</b> , rear set, for Saloon	11	A204 890 0678
<b>New Alustyle basic carrier bars</b> for Saloon	28	A204 890 1393
<b>New Alustyle bicycle rack</b>	31	A000 890 0293
<b>New Alustyle ski and snowboard rack "Comfort"</b>	30	B6 685 1703
<b>New Alustyle ski and snowboard rack "Standard"</b>	30	B6 685 1702
<b>Non-slip mat</b> for Estate	34	A204 684 0205
<b>Non-slip mat</b> for Saloon	34	A204 684 0005
<b>Padded play table</b> for integral child seat	25	A204 970 0000 9G43
<b>Partition</b> (for Estate)	34	A204 860 0042



Description	p	Item no.
<b>Rear-mounted bicycle rack for trailer coupling, folding for max. 2 cycles</b>	33	A000 890 1493
<b>Rear-mounted bicycle rack for trailer coupling, folding for max. 3 cycles</b>	33	A000 890 1593
<b>Rear Seat Entertainment System</b>	15	on request
<b>Rear Seat Entertainment System video cable</b>	15	A212 827 0204
<b>Rectifier</b>	37	A000 982 0021
<b>Reversible mat for Estate</b>	34	A204 680 0046
<b>Rim locks</b>	11	B6 647 0155
<b>Roof box 330, matt silver</b>	29	A000 840 3362
<b>Roof box 330, titanium metallic</b>	29	A000 840 3462
<b>Roof box 450, black metallic</b>	29	A000 840 3662
<b>Roof box 450, silver metallic</b>	29	A000 840 3562
<b>RUD-matic DISC snow chain system, 205/55 R16</b>	11	A204 583 0116
<b>RUD-matic DISC snow chain system, 225/50 R16</b>	11	B6 755 0004
<b>RUD-matic DISC snow chain system, 225/45 R17</b>	11	B6 755 0018
<b>Scarf</b>	43	B6 695 5451
<b>SD memory card</b>	15	B6 782 3973
<b>Shopping crate</b>	36	B6 647 0995
<b>Ski rack insert for roof box 330 and L</b>	29	A000 840 4718
<b>Ski rack insert for roof box 450 and XL</b>	29	A000 840 4818
<b>Stainless steel pedal covers with rubber studs, for automatic models</b>	23	A000 290 0501
<b>Stainless steel pedal covers with rubber studs, for manual models</b>	23	A000 290 0601
<b>Stowage crate</b>	36	A000 814 0041
<b>Sun canopy for "BABY-SAFE plus II", Limited Black</b>	25	A000 970 0055 9H95
<b>Tie with pin</b>	43	B6 695 6453

Description	p	Item no.
<b>Tie-down strap</b>	33	A000 890 0294
<b>Trailer coupling</b>	33	on request
<b>Transport and stowage bag for basic carrier bars</b>	28	A000 890 0111
<b>Tyre pressure gauge</b>	11	B6 658 8140
<b>Valve caps</b>	11	B6 647 2001
<b>Vario bag, "DaimlerSquare" fabric</b>	23	A000 899 1961
<b>Vehicle tool kit</b>	37	B6 685 0788
<b>Wheel bolts</b>	11	B6 647 0159
<b>Women's polo shirt, size XS-XL</b>	43	B6 695 5419 - 5423

March 2011

Please note: changes may have been made to the products since this brochure went to press (01.03.2011). The manufacturer reserves the right to make changes to the design, form, colour and specification during the delivery period, provided these changes, while taking into account the interests of the vendor, can be deemed reasonable with respect to the purchaser. Where the vendor or the manufacturer uses symbols or numbers to describe an order or the subject of an order, no rights may be derived solely from these. The illustrations may show accessories and items of optional equipment which are not part of standard specification. Colours may differ slightly from those shown in the brochure, owing to the limitations of the printing process. This brochure provides a general indication of the range of models, features, optional extras and/or colours available in various countries. Some of the models, features, optional extras and/or colours may not be available in your country or may only be available in a different specification. Additionally some models, features, optional extras and/or colours may only be available in combination with others. For current and more specific information in relation to the range of models, features, optional extras and/or colours available in your country, and their pricing, you should contact your nearest authorised Mercedes-Benz Passenger Car Dealer.